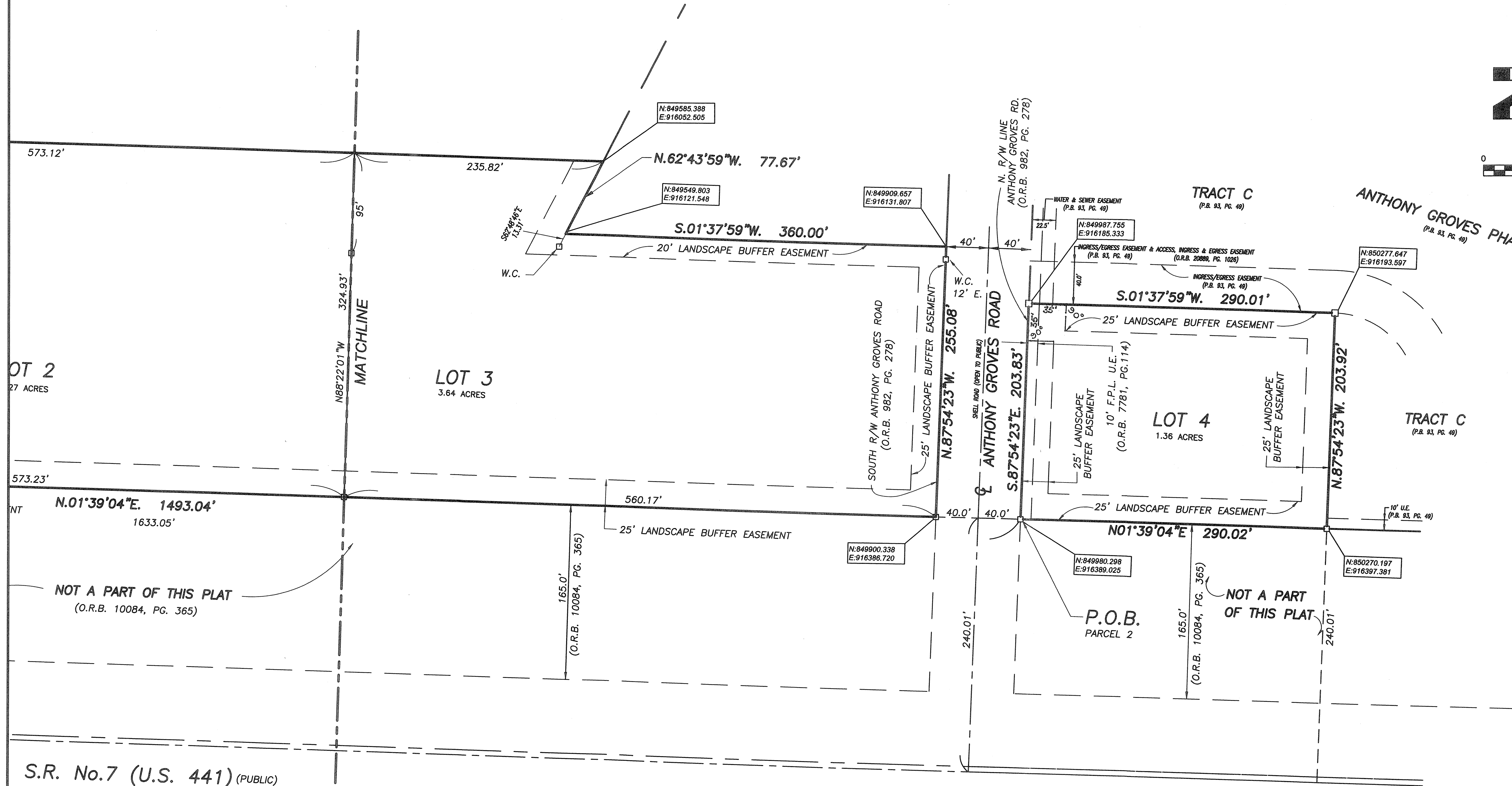
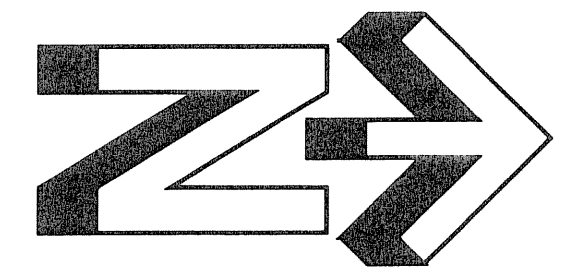


ANTHONY GROVES PLAZA

136

BEING A PARCEL OF LAND LYING IN THE EAST HALF (1/2) OF SECTION 1, TOWNSHIP 44 SOUTH, RANGE 41 EAST, VILLAGE OF ROYAL PALM BEACH, PALM BEACH COUNTY, FLORIDA
AUGUST, 2006

SHEET 4 OF 4



S.R. No.7 (U.S. 441) (PUBLIC)

ANTHONY GROVES PLAZA

FIELD:	JOB NO.: 04-1396D	F.B.:	P.D.
OFFICE: K.S.	DATE: AUG, 2006	DWG. NO.:	04-1396-1
CYC: C.W.	REF: 04-1396-1.DWG	SHEET:	4 OF 4